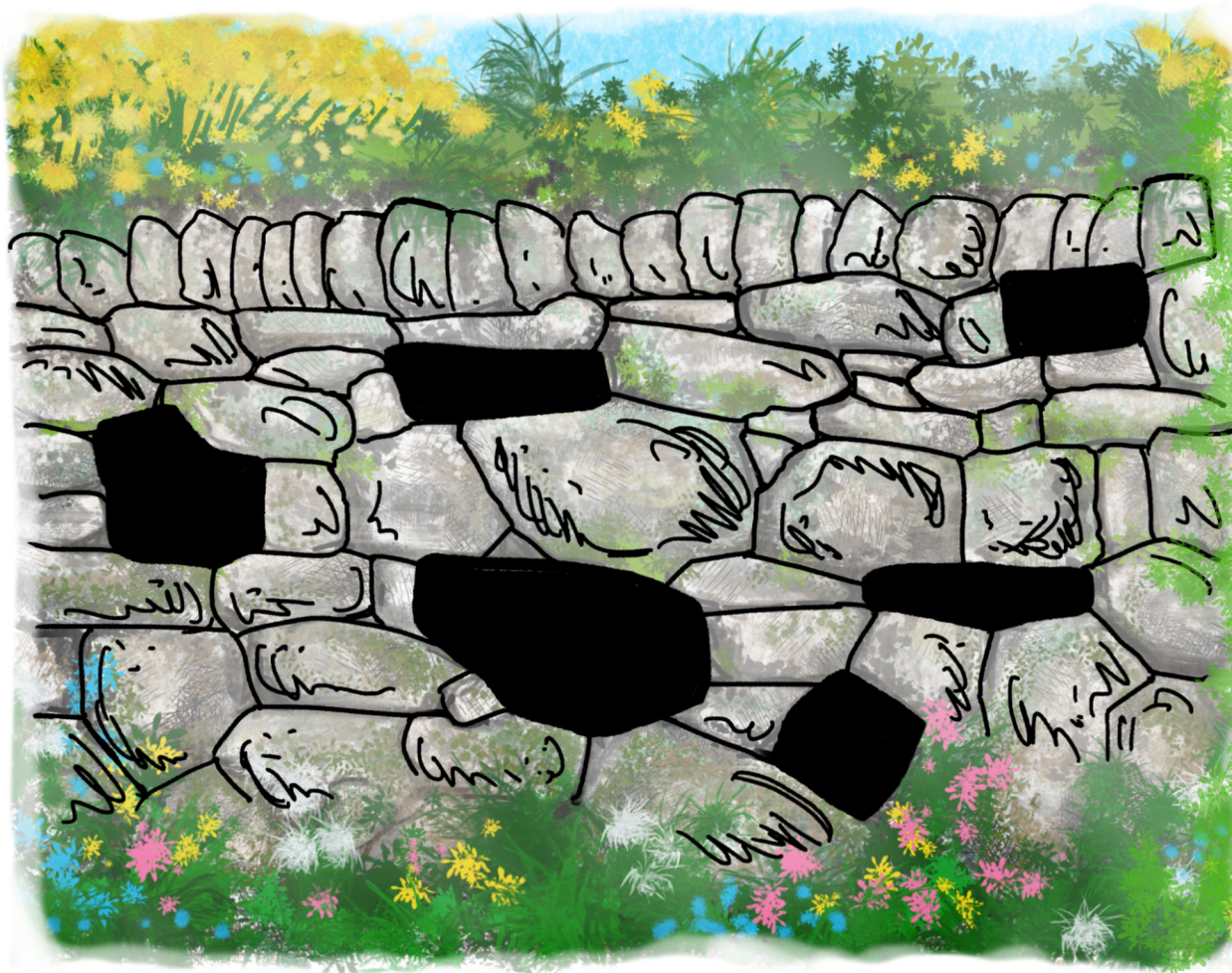


# THIS CORNISH HEDGE NEEDS REPAIRING!

AS A MASTER HEDGER, YOU WILL NEED TO REPLACE THE SIX STONES THAT HAVE BEEN LOST.

YOU HAVE FOUND SOME STONES THAT COULD BE USED, BUT NOT ALL OF THEM WILL FIT!

YOU NEED TO CHOOSE THE STONES THAT WILL FIT EACH SPACE PERFECTLY. WHICH SIX STONES SHOULD YOU PICK?



## DID YOU KNOW?

THE BIG STONES PLACED AT THE BASE OF A CORNISH HEDGE ARE CALLED 'GROUNDERS'.

THE SIDES OF A CORNISH HEDGE SHOULD SLOPE INWARDS TOWARDS THE TOP. THE ANGLE OF THIS IS CALLED THE 'BATTER'. THE STRONGEST HEDGES HAVE A CONCAVE (CURVED INWARDS) BATTER.